



plunket foundation



# Leave a Gift in your Will to the Plunket Foundation

Leave a legacy that will help children and families to thrive,  
for generations to come.



# Thank you for considering a Gift in your Will to the Plunket Foundation.

Caring for young children is one of the hardest jobs in the world. No one should face this journey alone. For over a century Plunket has been committed to giving babies, children and whānau in New Zealand the best start in life. Today, Whānau Āwhina Plunket serves around 280,000 young New Zealanders and their families every year.

With your support, future generations won't miss out on the vital services that you may have enjoyed. You may be a 'Plunket baby,' with precious memories recorded in your Plunket book. As your family has grown, you may have appreciated Plunket's support, reassurance, and advice.

A gift in your Will to the Plunket Foundation is a thoughtful way to thank a charity that has helped you and your whānau thrive. Your legacy will continue through your positive impact on future generations.

Scientific research shows that the early years of a child's life are the most important in determining their future wellbeing. By leaving a gift to the Plunket Foundation, you will help create a healthy future for New Zealand.

## How will my gift support Plunket?

Your gift will help Whānau Āwhina Plunket reach more children and families with the services that they need to thrive. Plunket is a leader in the early years child wellbeing space in Aotearoa New Zealand. Invited into the homes of 80% of new babies, Plunket is uniquely placed to identify the needs of families early.

Your gift will help us provide families with wrap-around support, so that every child in New Zealand gets the best start in life that they deserve.



# Your gift will help Whānau Āwhina Plunket reach more families through:



## Health and Development Support

Well Child Checks, specialist referrals such as lactation consultations, PlunketLine helpline for health advice.

**Healthy babies and children**



## Parenting Education and Advice

PlunketLine helpline, webinars and in-person workshops about: Safe sleep, starting solids, tantrums, hazards in the home, swim safety and car seat checks.

**Healthy confident families**



## Community Groups and Support for Whānau

Maternal mental health referrals, playgroups, coffee groups, in-home support services, walking groups and clothing exchanges.

**Healthy environments and connected communities**



## Advocacy

Formal submissions to Government, engaging across sectors with other partners to make the greatest impact.

**A healthy future for Aotearoa New Zealand**

## Fast facts - each year Whānau Āwhina Plunket:



is in touch with around  
**280,000**  
tamariki



enrols around  
**45,000**  
new pēpi (babies)  
(around 80%)



sees  
**58%**  
newborn  
Māori pēpi



receives around  
**95,000**  
calls to  
PlunketLine



has contact with around  
**1,760**  
whānau every day



runs nearly  
**366**  
community groups



provides  
**1,565**  
breastfeeding support sessions using video conference



had nearly  
**1.7 million**  
website visits



carries out around  
**27,000**  
B4 School Checks  
(2021-2022)

# Your impact

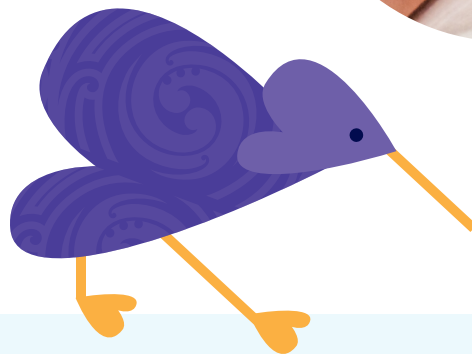
## Isla's story ♥

Mark and Francie Jurgeleit were overjoyed to welcome their healthy baby girl into the world. When Isla became a bit grizzly at just two weeks old, they were not overly concerned, as they assumed she must have a cold.

Francie remembered that she could call PlunketLine, 'just in case.' A Plunket nurse answered the phone at 11pm on a Saturday night and told the family to take their baby straight to hospital.

During the next few weeks in hospital, baby Isla battled with meningitis. Doctors credit her survival to the fact that she arrived just in time. 'Just in case' became 'Just in time.'

Mark says, "Plunket is a cause we will always support, as we are so extremely grateful. We genuinely believe that if PlunketLine hadn't been available to us, our daughter might not be here today."



## Our Legacy Supporters

The ultimate form of gratitude is leaving a gift in your Will.

### Sue's story:

Sue has left a gift in her Will because of Plunket's impact on her life. Sadly, when Sue was just one week old, her mother passed away. Sue's father and grandmother wouldn't have been able to cope without Plunket's support.

"I chose to leave a bequest to Plunket because they helped me when I needed help at the beginning of my life. New Zealand is lucky to have Plunket."

- Sue Clothier



# Serving families for over a century



**1906** The first Plunket baby, Thomas Rangiwhi Mutu Ellison, is given nutritional support by Dr Truby King and Māori Midwives, Mere Harper and Ria Tikini.

**1908** The society takes the name 'Plunket', after Lady Victoria Plunket, the wife of the Governor General.



**1917** There are 90 branches of Plunket and 25 nurses are employed.

**1981** The first national car seat rental scheme is established.

**1994** PlunketLine (24/7 helpline) is launched.



**2008** The Plunket Foundation is set up as an endowment fund to provide sustainable revenue for Plunket's important work.

**2017** Regional branches are amalgamated into one national charity – the Royal New Zealand Plunket Trust.

**2020** Our new brand is launched, Whānau Āwhina Plunket.



**Today around 280,000 tamariki benefit from Whānau Āwhina Plunket's wraparound support services.**

**Will you help us continue our important work for the next generation?**



# The Plunket Foundation

By including the Plunket Foundation in your Will, your gift is long lasting, impacting the lives of future generations.

The Plunket Foundation is an endowment fund which helps generate sustainable revenue for Plunket. Some of the world's great charities, hospitals and universities have endowment funds which allow them to grow, thrive and ride out storms. Becoming less reliant on Government funding cycles will help Plunket grow and maintain important services which make a difference to children and whānau.

Few charities in New Zealand have endowment funds. Leaving a gift in your Will to the Plunket Foundation is a unique way to ensure that your legacy will live on forever.

**"Plunket has made a positive impact on our lives, communities, and country for over a century. Leaving a gift in your Will to the Plunket Foundation is a great way to thank Plunket and ensure your legacy lives on through the healthy futures you create."**

**Christine Lake CNZM,  
Co-Chairperson, Plunket Foundation.**

Since it was established in 2008, the Plunket Foundation has given nearly \$4 million to Whānau Āwhina Plunket, supporting families with young children across New Zealand.

## When you leave a gift in your Will to the Plunket Foundation



**Your gift**



**Is invested and grown**



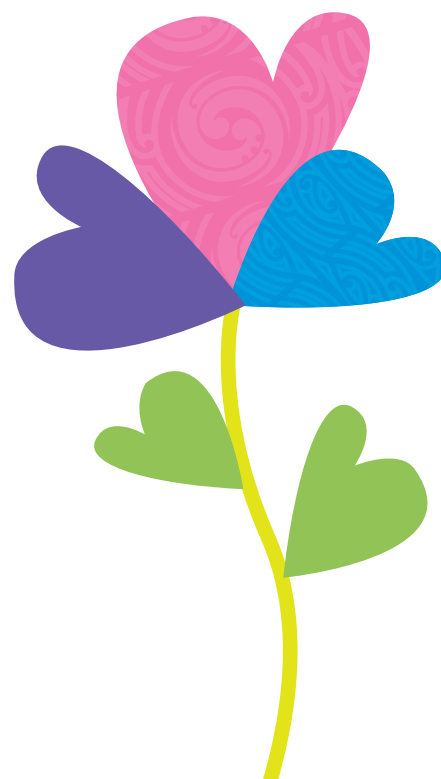
**And the ongoing income earned**



**Goes to Whānau Āwhina Plunket to support families with young children**



**plunket foundation**



# Checklist: how to leave a Gift in your Will

Leaving a gift in your Will is a simple process.

## Decide

- Think about how you'd like to take care of your loved ones before considering a gift to the Plunket Foundation.
- Discuss your wishes with your loved ones.

## Plan

- Decide the type of gift. Many people support Plunket with a share of their estate, after other commitments have been met.
- Decide the purpose of the gift. Many people make a gift for 'general purposes,' as this allows Plunket to use the funds where needed most.

## Act

- When creating or updating your Will, please consult your lawyer or solicitor. Here is some wording that you may like to give to your solicitor.

"I bequest to the Plunket Foundation \_\_\_\_% of my estate, (or) \_\_\_\_% of the residue of my estate, for the general purposes of the Plunket Foundation, with the registered charities number CC35424. The official receipt of an authorised officer of the Plunket Foundation will be sufficient discharge to my Executor/ Trustee."

If your estate is straightforward, you may like to create an online Will through Footprint.



[www.myfootprint.co.nz/org/plunket](http://www.myfootprint.co.nz/org/plunket)

Write your Will today and receive a 75% discount through our trusted partner Footprint.

Footprint is New Zealand's largest online Will provider and it only takes 15 minutes to complete your Will on their solicitor approved platform.





# The Plunket Foundation

Charity Registration Number: CC35424

Physical Address: Level 3, Simpl House, 40  
Mercer Street, Wellington 6011

Postal Address: PO Box 5474 | Wellington 6140

Email: [legacy@plunket.org.nz](mailto:legacy@plunket.org.nz)

Phone: 027 4059 442 / 0800 205 555

We appreciate legacy gifts of any size. This is a great way to make a lasting contribution without impacting your financial needs during your lifetime.

## We promise you

**Privacy** – We will always respect your privacy and treat anything you share with us with confidentiality.

**Autonomy** - We respect your wishes and understand your loved ones will always come first.

**Transparency** - We value every gift, no matter the size. We will use your gift carefully, and according to your wishes, so it has the greatest possible impact.

**Respect** - We respect your right to change your mind at any time.

**Communication** - We will answer all your questions and keep you informed about your impact. We will communicate with you in the way that suits you best.



## Get in touch

### Please get in touch if:

- you have some questions about leaving a gift in your Will.
- you would like to let us know about a gift you've already included in your Will.

**Please contact our Philanthropy Manager for a confidential chat:**

**Loren O'Sullivan**

Phone: 027 4059 442 / 0800 205 555

Email: [legacy@plunket.org.nz](mailto:legacy@plunket.org.nz)

Post: PO Box 5474 | Wellington 6140

*Thank you for helping us give every child  
in New Zealand the best start in life!*



**plunket foundation**



In the first 2,000 days, we make the difference of a lifetime.